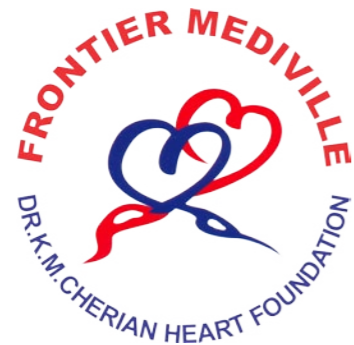


New age Education



Sandhya Cherian
Vice President,
Frontier Mediville

For a student passionate about Life Sciences and interested in pursuing a career in the same, “Frontier Mediville”, is the place to be! “Frontier Mediville”, India’s First Medical Science Park, developed by Frontier Lifeline Hospitals & Dr. K.M. Cherian Heart Foundation has been recognized as

the “Knowledge Cluster” of India by academicians and students. This integrated healthcare park, spanning 360 acres, is a one-stop destination for Healthcare, Education, Training, Basic Research and Contract Research Outsourcing activities.

FNH, Sandhya Cherian, Vice President, Frontier Mediville takes us through the milestones that this iconic knowledge hub has received.

What was the main ideology behind starting this institute?

All specialty surgeries are expensive mainly because Implantables, Consumables and Disposables come at a very high cost. In a Country like India, there are many who cannot afford expensive treatment and hence we wanted to do some research to see if we could

Frontier Mediville offers many unique Para-Medical Undergraduate and Graduate Courses that are not available anywhere else in the Country. In an interview with



produce our own Implantables at a relatively lesser price. This is the main ideology behind starting “Frontier Mediville” and this is how the Research wing of Frontier Lifeline Hospital (Dr. K.M. Cherian Heart Foundation) got started.

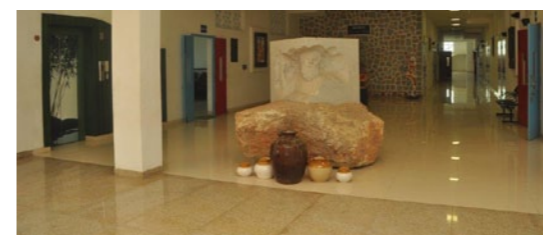
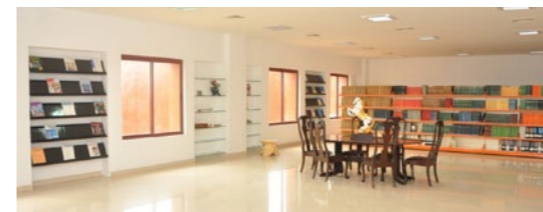
Can you tell us about the different programs that you offer?

There are many students who want to become Doctors but unfortunately, not everyone becomes a Doctor. Our courses

are aimed at students who want to pursue the Medical stream and want to work in a healthcare environment. The Unique courses that we offer are the 3 year B.Sc., degree Courses in Cardiac Care Technology, Cardiopulmonary & Perfusion Care technology, Physician Assistant, Operation & Anaesthesia Technology, Renal Dialysis Technology, Nuclear Medicine Technology and Radiology Imaging Technology. We also offer Diploma courses in Stem Cell & Tissue Engineering Technology and Nursing Aide.

Can you name any distinct course and your teaching approach towards students?

The Physician Assistant Course was first started in India by Dr. K.M Cherian in 1987, and the students have passed out and have been placed in high, well paid positions both in India and in many countries abroad. Many of them have also gone on to do their Ph.D’s in Life Sciences. Some Institutions have seen the success of our program and have also started the PA program.



We believe in imparting one-to-one education to every student. This enables the faculty to give that individual attention that is needed to groom the student.

Can you elaborate on your Research wing and the latest research projects you are currently working on?

The goal of our current tissue engineering efforts is to develop cardiovascular implants from biological tissues with unlimited durability with a physiological blood flow pattern mimicking normal native tissue and has biologically non-reactive surface properties.

This would definitely save considerable expenditure for our country considering the cost of existing imported ones. We are waiting for Phase 3 trial permission from DCGI currently. We have also been granted permission from the ICMR to conduct research on Stem Cells.

Have you initiated any kind of tie-ups and collaborations initiated?

Offering our students only with the very best, Frontier Mediville has tie-ups with many National and



International Institutions.

National Institutions are :

- Dr. MGR Medical University
- The Madras University
- BITS, Pilani
- Indra Gandhi Open University
- Meenakshi University, Chennai
- Saastra University, Tanjore

International Institutes are:

- University of Minnesota, USA
- University of Southern Denmark, Denmark
- National University of Singapore
- KRIBB, Korea

Tell us about career-

orientation in your training programs

Each of the Courses we offer at Frontier Mediville are Career oriented and they are in high demand in Hospitals and Healthcare settings. Most of the students get placed almost immediately after graduation in Hospitals. This is a Practical oriented course where the last 2 years of the Course will focus on the student getting Hands-on-Training at the Hospital. This approach ensures that the students have an edge over the others and also promotes smooth transition of these students into the work arena when they graduate. Regular Workshops and Symposia that are being conducted at Frontier Mediville sets it apart from other Colleges in the area of Life sciences.

Please elaborate on the museum that is situated inside Frontier Mediville

The Pathology Museum known as “Noah’s Ark” displays a collection of hearts ranging from frogs to elephants. It houses over 7000 cardiac specimens and also more than 2000 slides of the Heart conduction bundle alone, making this the largest Pathology museum



in the world. This mammoth study on hearts received from all over the U.S and also from India and various other countries in the world have been comprehensively studied and documented. This knowledge is, and would be, of great value to physicians and surgeons dealing with children born with congenital heart disease. It would not only help aid more accurate diagnosis but also be of immense use in the treatment and lifelong care of cardiac patients.

The goals of the museum are:

1. Education
2. Research
3. Service to community

What are some of the recent conferences that you have hosted?

Recently we hosted the National conference on Herbal Medicine called “Back to the future” at Frontier Mediville. The aim of this National Conference was to

create an awareness of how herbal medicine can complement Modern medicine to give a Holistic approach to treatment of various diseases. This Conference also showcased the recent advances in the Herbal Industry.

Which field of study do you see the most potential in the future?

“Regeneration by Stem cell application” is definitely the Future of Medicine. Stem cells are becoming an important part of Regenerative Medicine. There is so much of Research being conducted in Stem cells and it has been seen that several chronic diseases can be cured with successful application and use of Stem cells. As an extension of this, Frontier Mediville, plans to establish a “Bio-Hospital”. The concept of the Bio hospital is “Regeneration and Rejuvenation”, an amalgamation of Modern Medicine with Natural Medicine.

